

Category 6 UTP Patch Cords

DIGILINK G600 Patch Cords are assemblies of 4 twisted pairs 24-26 AWG (0.51mm-0.40mm) stranded wire cables with modular plugs (superior three piece connector) crimped on both ends. T568A and T568B wiring schemes are both available. The premium category boot gives a designer look and snag less feature.



Product Features & Compliances

- Available in the lengths of 1, 2, 3 & 5 m
- Available in grey, blue, red, yellow and green
- Cat 6 Unshielded Twisted pair 100 Ω stranded cable
- Multi Strand and Highly flexible.
- Exceeds the performance requirements as specified under EIA/TIA 568 A/B Category 6 specification.
- 24-26 AWG Round
- HDPE Insulation over conductors, PVC jacket all over
- Individual cable pair separated by a PE former
- UL94V-0 rated plastic
- RoHS Compliant
- ETL Verified
- ANSI/TIA/EIA-568-B.2
- ISO/IEC-11801
- Performance verified upto 600 MHz

Specifications

Mechanical

Length: 1, 2, 3 & 5 m
 Standard Colours: Grey (other colours available on order)
 Wiring: 24-26 AWG
 Polycarbonate Plug
 Gold over Nickel Contacts
 Stranded, Unshielded

Electrical

Current rating: 1.5A max
 Insulation resistance: 500m Ω (min)
 Voltage rating: 30 V
 Contact Resistance: 15 m Ω (max) per contact

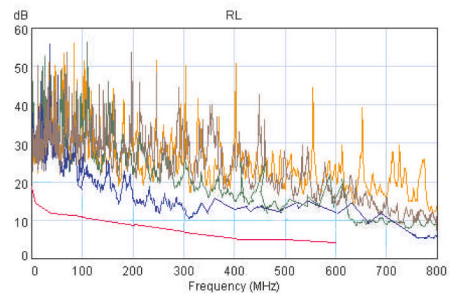
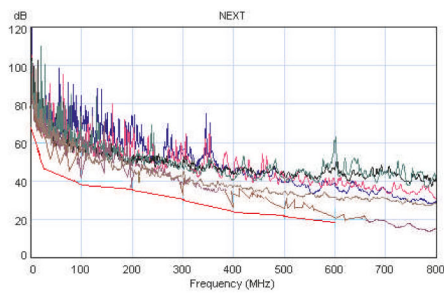
Category 6 UTP Patch Cords



DIGILINK Category 6 (G600) UTP 100 Ohm LAN Patch Cords

PERFORMANCE CHARACTERISTICS TIA/EIA-568-B2-1												
FREQUENCY (MHz)	INSERTION LOSS (Attenuation) dB/100m		NEXT (dB)		PSNEXT (dB)		ELFEXT (dB)		PSELFEXT (dB)		RETURN LOSS (dB)	
	Standard	DIGILINK	Standard	DIGILINK	Standard	DIGILINK	Standard	DIGILINK	Standard	DIGILINK	Standard	DIGILINK
1	2.2	2	65	80.9	62	78.4	62.7	75.3	59.7	72.7	19	23.4
4	4	3.7	63.1	69	60.6	66.7	51.3	63.3	48.3	61	19	27.8
8	5.7	5.3	58.2	63.7	55.6	62.2	45.2	58.8	42.2	57.1	19	24.4
10	6.3	5.8	56.6	63.2	54	60.9	43.3	58.6	40.3	56.1	19	23.6
16	8	7.4	53.2	63.2	50.6	60.7	39.2	56.7	36.2	55.4	18	23.8
20	9	8.3	51.6	61.5	49	58.9	37.2	52.1	34.2	49.4	17.5	24.4
25	10.1	9.3	50	60	47.3	57.3	35.3	47.2	32.3	44.4	17	22.5
31.25	11.4	10.5	48.4	58.1	45.7	55.6	33.4	43.1	30.4	41.6	16.5	23.1
62.5	16.4	15	43.4	47.7	40.6	45.3	27.3	38.9	24.3	37.4	14	22
100	21.3	19.2	39.9	41.6	37.1	39.5	23.3	34.6	20.3	33.5	12	18.6
200	31.5	28	34.8	36.4	31.9	35.8	17.2	26.7	14.2	25.8	9	15.4
250	35.9	31.6	33.1	36.9	30.2	34.7	15.3	28.7	12.3	25.4	8	15.5
300	43.9	37.9	30.6	33.1	29.7	32.1	13.8	25.4	11.4	22.8	7	14.9
350	49.8	42.1	28.9	31.7	27.6	30.4	12.4	20.5	9.4	20.1	6.6	14.5
400	57.5	49.6	25.5	29.9	24.6	28.3	11.8	19.6	8.3	17.7	5.8	14.4
500	60.2	50.8	23.1	27.8	22.8	25.8	10.1	18.2	7.4	15.9	5	14
600	64.8	51.6	19.5	20.5	18.9	20.2	8.6	17.3	6.5	15.2	4.8	13.8

** Extrapolated Values



Ordering Information

Description	Type	Length	Product Code
DIGILINK Cat 6 UTP Patch Cord Premium range	Grey	1m	DC6PCURJ01-GYM
		2m	DC6PCURJ02-GYM
		3m	DC6PCURJ03-GYM
	Red	1m	DC6PCURJ01-RDM
		2m	DC6PCURJ02-RDM
		3m	DC6PCURJ03-RDM
	Green	1m	DC6PCURJ01-GNM
		2m	DC6PCURJ02-GNM
		3m	DC6PCURJ03-GNM
	Blue	1m	DC6PCURJ01-BLM
		2m	DC6PCURJ02-BLM
		3m	DC6PCURJ03-BLM
	Yellow	1m	DC6PCURJ01-YLM
		2m	DC6PCURJ02-YLM
		3m	DC6PCURJ03-YLM
DIGILINK Cat 6 UTP Patch Cord Economy range	Grey	1m	DC6PCURJ01-GY
		2m	DC6PCURJ02-GY
		3m	DC6PCURJ03-GY
	Red	1m	DC6PCURJ01-RD
		2m	DC6PCURJ02-RD
		3m	DC6PCURJ03-RD
	Green	1m	DC6PCURJ01-GN
		2m	DC6PCURJ02-GN
		3m	DC6PCURJ03-GN
	Blue	1m	DC6PCURJ01-BL
		2m	DC6PCURJ02-BL
		3m	DC6PCURJ03-BL
	Yellow	1m	DC6PCURJ01-YL
		2m	DC6PCURJ02-YL
		3m	DC6PCURJ03-YL