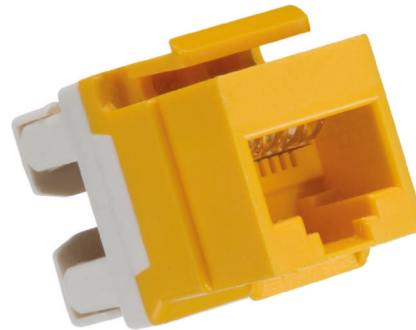


Category 5e+ Unshielded RJ-45 Keystone Jacks

DIGILINK E400 unshielded copper RJ-45 keystone jack series includes high performance Category 5e+ snap-in 8-position/8-contact (8P8C) jacks conforming to IEC 60603-7-2 (unshielded 100 MHz connectors). DIGILINK E400 jacks are designed for fast and easy snap-in and out of wall plates and patch panels. All DIGILINK E400 jacks are designed in a 180° form and are available with back interconnection of 110 IDC blocks or special LSA-Plus/110 IDC combination blocks in T568A, T568B. All jacks fully conform to ANSI/TIA/EIA-568-B.2 Category 5e+, CENELEC EN 50173 and ISO/IEC-11801 (2nd Edition) requirements. DIGILINK E400 unshielded copper RJ-45 keystone jack ensure long lasting high-performance



Product Features & Compliances

- Available in white, blue, green, yellow, red & black colours with 110/DC back interconnecting blocks.
- Robust and installer friendly design.
- Exceeds Cat 5e+ Performance.
- Compatible with 22-26 AWG solid cables.
- Compatible to T568A, T568B wiring pattern.
- Open out shuttered keystone jack (optional)
- Jacks with 180° from design-provide easier access
- UL-94V0 rated plastics.
- RoHS Compliant
- ETL Verified
- ANSI/TIA/EIA-568-B.2
- ISO/IEC-11801
- Performance verified upto 400 MHz

Specifications

Mechanical

Plug retention force: 14Kgf (140N)
 Plug reliability: 750 cycle minimum
 Jack Contact Material: Phosphor bronze 50µ” gold over 100µ” nickel plating
 Conductor compatibility range: 22-26AW

Electrical

Propagation delay: 2.5ns Max @1-100 MHz
 Current rating: 1.5A max
 Insulation resistance: 500mΩ (min)@500 Vdc
 Voltage rating: 72Vdc max
 Contact resistance: 20 mΩ (max) per contact

Ordering Information

Description	Type	Product Code
DIGILINK Cat 5e+ Unshielded RJ-45 keystone jacks	White	DCEKYSTU-WT
	Blue	DCEKYSTU-BL
	Green	DCEKYSTU-GN
	Yellow	DCEKYSTU-YL
	Red	DCEKYSTU-RD
	Black	DCEKYSTU-BK

Note: Suitable DIGILINK face plate and patch panels are available for these keystones- refer page number & respectively: A35/35/37/38/39