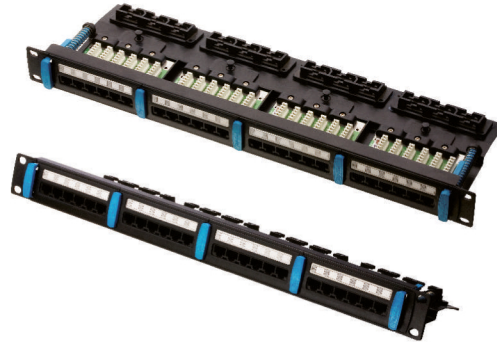


Category 5e+ Smart Series Patch Panel



DIGILINK Introduces the E400 Smart Series range of Patch Panels for termination of horizontal and backbone cabling. The design boasts of excellent cable management coupled with a robust construction delivering value for money to the customers. Front sprung cable manager clips helps maintain cable discipline looks.



Product Features & Compliances

- Rear cable to provide strain relief and locking to the horizontal and backbone cables
- Springed front-end cable management to manage looks, performance and aesthetics of cords.
- Exceeds Cat 5e+ requirements of EIA/TIA.
- A new improved "rear slant" panel design to avoid kinks Caused while installing & crimping cables
- Clear label window for port identification.
- 6 port modular tray unit assembly.
- Cable clips made from Fire Retardant ABS plastic.
- ETL Verified
- ISO/IEC-11801
- ANSI/TIA/EIA-568-B Cat 5e
- ETA/TIA TSB 40 A
- RoHS Compliant

Specifications

Mechanical

Size: 482.6 x 44.2 (19" x 10")
 Panel Material: Steel-fully powder coated
 Unshielded RJ 45 (6 port jack module)
 Mating cycles: 750
 Spring Contact: Phosphor bronze 50µ" gold over 100µ" nickel plating

Electrical

Contact resistance: 20 mΩ (max) per contact
 Voltage rating: 72 Vdc max
 Dielectric strength: 1000 V rms for 1 minute min
 Insulation resistance: 500mΩkm(min)@500Vdc
 Current rating: 1.5A max

Ordering Information

Description	Type	Product Code
DIGILINK Patch Panel Cat 5e+ UTP Smart Unshielded Modular	(Krone) 1 U - 24 port	DCEPP24USKR1U

Note: For Keystone specification refer page number. A40