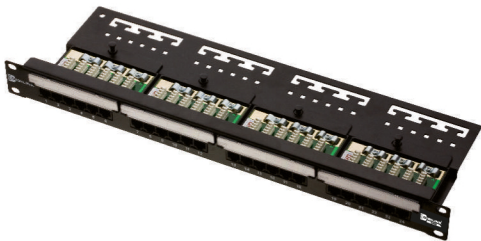


DIGILINK E400 Patch Panel is an array of 8P8C connectors, typically rack mounted that houses cable connections. One normally shorter patch cable will be plugged into the front side, while the back will hold the connection of a much longer and more permanent cable. The assembly of hardware is arranged so that a number of circuits, usually of the same or similar type, appear on jacks for monitoring, interconnecting, and testing circuits in a convenient, flexible manner. Patch panels offer the convenience of allowing technicians to quickly change the path of select signals, without the expense of dedicated switching equipment.



Product Features & Compliances

- Designed cable strain relief 'B' clips.
- Modular design for termination of horizontal & backbone cabling.
- Exceeds Cat 5e+ requirements of EIA/TIA.
- Performance rated at 100 Mbps.
- Clear label window for port identification.
- 6 port modular tray unit assembly.
- The PCB design combines advanced balancing methodology with pair isolation technique which guarantee a EIA/TIA TSB 40A.
- ISO/IEC-11801
- ANSI/TIA/EIA-568-B Cat 5e
- ETA/TIA TSB 40 A
- RoHS Compliant
- ETL Verified

Specifications

Mechanical

Size: 482.6 x 44.2 (19" x 10")
Panel Material: Steel-fully powder coated
Unshielded RJ 45 (6 port jack module)
Spring Contact: Phosphor bronze 50μ" gold over 100μ" nickel plating
Mating cycles: 750

Electrical

Contact resistance: 20 mΩ (max) per contact
Voltage rating: 72 Vdc max
Dielectric strength: 1000 V rms for 1 minute min
Insulation resistance: 500mΩkm(min)@500Vdc
Current rating: 1.5A max

Ordering Information

Description	Type	Product Code
DIGILINK Patch Panel Cat 5e+ UTP Modular	(Krone) 24 port fully loaded	DCEPP24UKR1U
	6 port module	DCEPP6UKRMO
	6 port blank module	DCEPP6UKRBLK

Note: For Keystone specification refer page number: A40