

# SE3100

## IP-COM Gigabit Multi-WAN VPN Router

### Overview

IP-COM SE3100 Gigabit Multi-WAN business router is designed for SME / Branch office. Multi-WAN delivers the functionality of Load Balancing that is, according to sessions or IP addresses, each line gets the average utilization at the same time to optimize bandwidth usage. Also, with the support of hardware NAT acceleration, users could visit the internet more quickly even when there are around 150 PCs in LAN. And PPTP/L2TP/IPsec based VPN routers also allow you to empower your road warriors with remote access anywhere and anytime using secure VPN tunnels.



### Main Features

#### Multi-WAN to reserve bandwidth expansion possibility

Featured auto line back-up: switch all the sessions from dropped line automatically to another to keep an always on-line network as well as build gigabit backbone network by Multi Gigabit WAN.

#### Load balance on two different ISP's access

Supporting 2 Balance modes: Session-based, IP-based to optimize bandwidth usage and solves cross-net bottleneck problem for different ISPs access.

#### Smart bandwidth control to optimize bandwidth usage

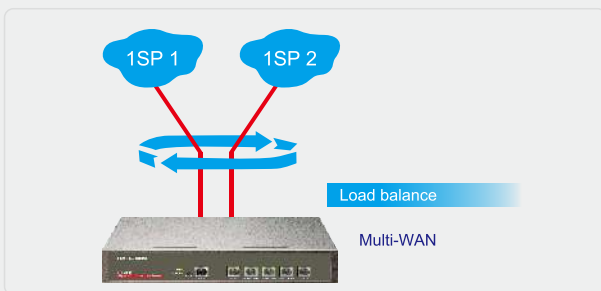
Allocating bandwidth according to different time periods under different IP address or account to fit into diverse network environments.

#### Built-in hotspot function with customized AD push

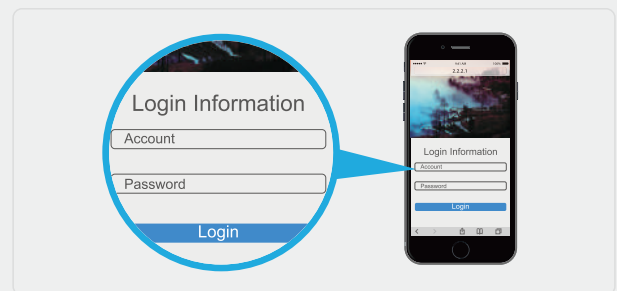
Wi-Fi hotspot advertising not only grow your social media fans, capture valuable data for intelligent promotion, but also increase revenue and engagement by inserting your own coupons or IM into our ad-system.

#### Build private & safe communication via VPN tunnel

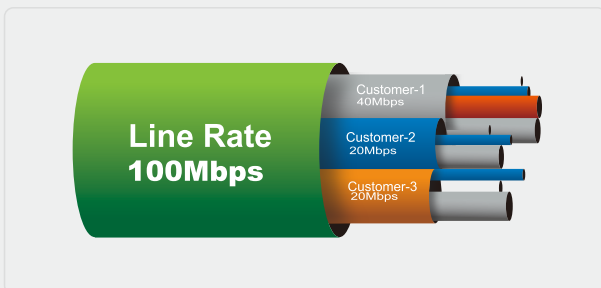
With Se3100 customer can build secure communication between headquarters to branch via PPTP/L2TP/IPsec VPN, and administrators could get all the VPN connections status in Headquarters' screen and manage each router in branches to save maintenance effort and cost.



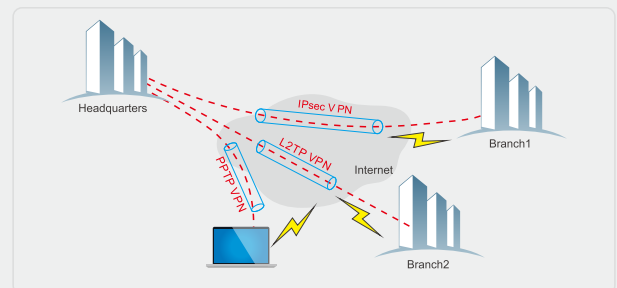
- Multi-WAN and ISP base load balance



- Access authentication and customized AD for promotion



- Smart bandwidth control per IP address or account



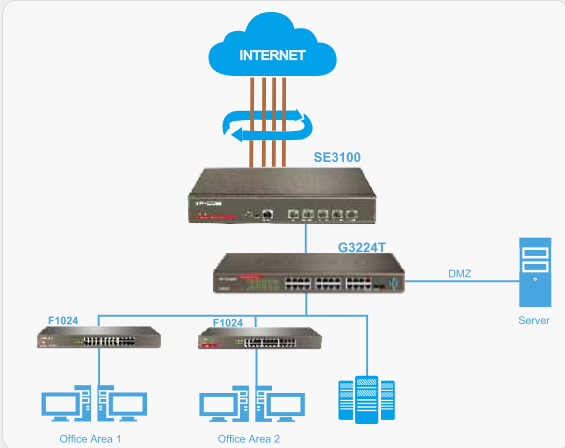
- PPTP/L2TP/IPsec VPN for secure communication

## Specification

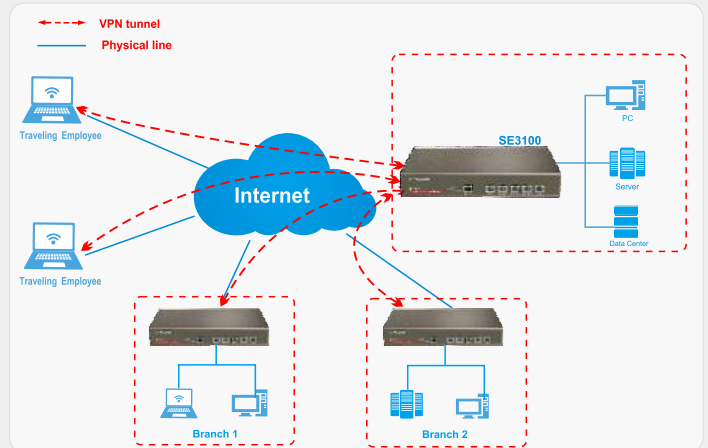
<b>Model No.</b>	SE3100	
<b>Hardware Features</b>		
Dimension	294*178.7*44(mm)	
CPU Frequency	800MHz ARM CPU	
Flash	16MB Nor Flash / 128MB Nand Flash	
RAM	256MB	
Interfaces	1-4*GE WAN / 4-1*GE LAN / 1*Console(RJ-45)	
Button	1*Reset	
Power Supply	AC 100~240V 50/60Hz	
User capacity	120	
Operating Temperature	-10°C ~ 70°C	
Operating Humidity	10%~90% non-condensing	
Storage Humidity	10%~90% non-condensing	
Default Settings	IP Address: 192.168.0.252	
Certifications	FCC CE RoHS	
<b>Software Features</b>		
Kernel	Linux	
Compliant Standards	IEEE 802.3ab/3u/3	
Internet Connection Type	PPPoE / Dynamic IP / Static IP	
Multi WAN Load Balance	Session / User based	
DHCP Server	DHCP Server	
Bandwidth Control	32 Entries (Account/IP Range based)	
Portal Authentication	200 authentication accounts	Customize the Internet access time
	Customize advertise picture	Customize redirect page
	Online users statistics	
Port Forwarding	Support	
Static Routing	16 entries	
Port Forwarding	32 entries	
Remote Web Access	Support	
WAN Ping Prohibited	Support	
DDNS Service	Dyndns/No-ip	
Web Page timeout	Support	
PPTP Server	Maximum 32 clients	
PPTP client	Support	
L2TP Server	Maximum 32 clients	
L2TP client	Support	
IP-SEC Server	Maximum 32 Peer Tunnel	
VPN Passthrough	PPTP/L2TP/Ipsec	
Diagnostics	Ping&Traceroute	
Management Tool	Date&Time Settings / Reboot / Firmware upgrade / Backup Configuration	
	Restore Configuration / Username Management / System Log	

**SOLUTION TOPOLOGY**

Load Balance Mode:



VPN Mode:



**NEW ARRIVAL**  
**CW500/CW1000 AC**



**Overview**

CW500/CW1000 is hardware controller can perfect match with all IP-COM Access Point (except Point to Point AP). Through IP-COM controller, can configure, manage and monitor APs. CW500 up to manage 32 APs and CW1000 up to manage 512 APs.



Easy to deploy



Manage multiple APs Simultaneously



Discover Access Point Automatically



Centralized Management

**Main Features**

**Easy to deploy**

With deployment in by-pass mode you can connect IP-COM AC to your core switch without changing existed network topology and freely manage all IP-COM APs.

**Manage multiple APs Simultaneously**

Adoption of IP-COM latest firmware you can manage the Wireless APs simultaneously up to 512 APs and monitor 3000 online clients.

**Discover Access Point Automatically**

By function of automatic discovery you can easily find and position the installed APs through IP-COM AC Controller for convenient management and maintenance.

**Centralized Management**

Powerful functions for centralized management such as modify Device Description, SSID, Channel, Security, Output Power, Client Limit, Online Client Status, Batch Upgrade/Reboot/Reset, AP Failure Alarm and AP Traffic Alarm.