

G2124T

24 -Port Gigabit Switch with 2 combo SFP Slots

G2124T

24 -Port Gigabit Switch with 2 combo SFP Slots

Products Description

G2124T is a green energy-conservation layer2 switch . It is specially designed to build a fast, convenient and easy-maintained wired access network. G2124T apply with the world's leading chipset vendor Broadcom solution, which brings a strong switch performance. The all-steel-shell body improves the heat dissipation and ensures the stability. Professional port lightning-proof enables to reduce the damage of severe weather. It supports full wire-speed non-blocking forwarding and port auto-flip. With high enterprise-level art, it is the ideal solution to build your gigabit wired access network (SMBs, hotels, Video Surveillance).



- 24 10/100/1000Mbps RJ45 ports, 2 combo Gigabit SFP slots
- 19-inch rack-mountable, 1U steel case
- Plug and play, Without configuration

Key Feature

- Compliant with IEEE802.3, IEEE802.3u, IEEE802.3x, IEEE802.3ab
- Store & forward, share memory, non-blocking architecture
- Supports MAC address self-learning and auto MDI/MDIX
- Provide 24 10/100/1000Mbps auto-negotiation ports, 2 Gigabit combo SFP slots
- Supports full-duplex 802.3x flow control and half-duplex backpressure flow control
- Supports 8K MAC address list, MAC address learning and auto-ageing
- Supports Power Inductive Lightning Protection up to 6KV
- Built-in switching power adapter, support AC 110-240V 50/60Hz input
- Fanless design
- Standard 19-inch rack-mountable, 1U steel case
- Plug and play, no need configuration

Product Features



Multiple and flexible ports

Provide 24 10/100/1000M auto-negotiation RJ45 ports, 2 combo Gigabit SFP slots. All ports have the wire-speed forwarding capability and support IEEE 802.3x full-duplex flow control and half-duplex backpressure flow control. The multiple ports provide great flexibility for users to build networks and allow users to quickly build all kinds of wired networks.



Excellent Lightning-Proof design

Integrated professional lightning-proof circuit which supports power lightning-proof (common mode protection 6KV). Effectively reduce the damage to the network system caused by the thundery weather.



Quiet and Green Energy Conservation Design

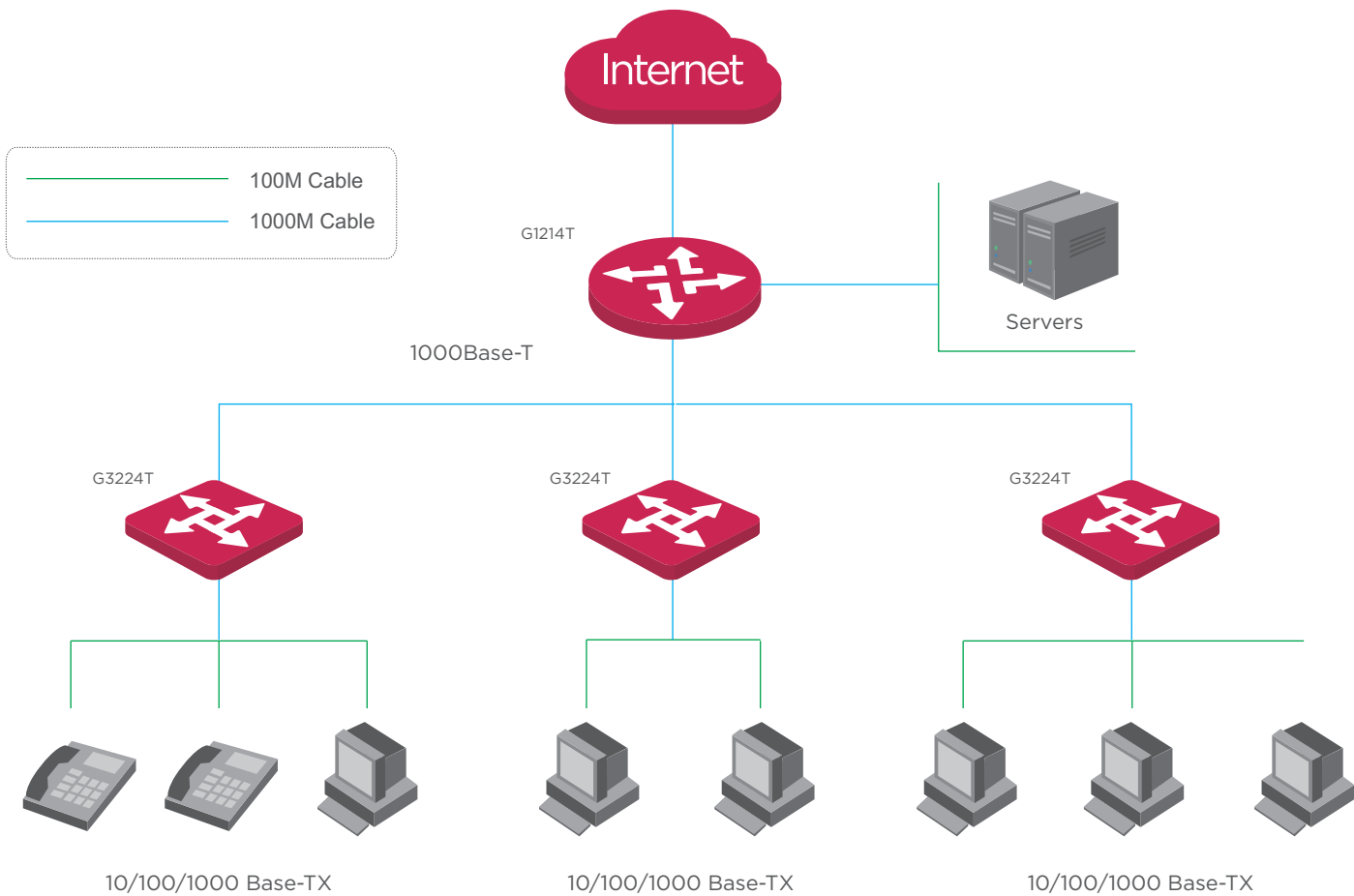
Adopts low-power consumption IC Plus chipset solution. Fanless design enables quiet and energy conservation. When no data transmits in the port, it will automatically change into power-saving state and utmost reduce power consumption and operating costs.



Easy to use

Plug-and-play, which helps you quickly build Gigabit wired network and greatly simplify the management and maintenance of equipment. It supports desktop and standard 19-inch rack mounted installation with two pairs of rack-mounted hangers, which can be easily installed in a standard 19-inch machine room cabinet.

Application Scenarios



| Product Model | | G2124T |
|------------------------|--|--------|
| Hardware Features | | |
| Standards&Protocols | IEEE 802.3、 IEEE 802.3u、 IEEE 802.3z、 IEEE 802.3ab、 IEEE 802.3x、 IEEE 802.1D、 IEEE 802.1w、 IEEE 802.1Q、 IEEE 802.1p | |
| Interface | 24*10/100/1000Mbps RJ45 Ports(Auto Negotiation/Auto MDI/MDIX) | |
| Transfer Method | Store-and-Forward | |
| Switching Capacity | 48Gbps | |
| Packet Forwarding Rate | 35.7Mpps | |
| Address Table | 8K | |
| Power Consumption | <20W | |
| Power input | 100-240VAC, 50/60Hz | |
| Dimension (L×W×H) | 440mm*178mm*44mm | |
| Fan Quantity | Fanless | |
| Environment | Operating Temperature:: 0°C~40°C Storage Temperature: -40°C~70°C Operating Humidity: 10%~90% non-condensing Storage Humidity: 5%~90% non-condensing | |
| Software Features | | |
| Port Feature | IEEE802.3x flow control (full duplex) Storm control based on port rate percentage PPS based storm control | |
| QoS | Supports Port/Flow- based Rate Limiting Supports 8 priority queues Supports Queue scheduling: SP, WRR | |
| Link Aggregation | LACP Up to 6 aggregation groups, containing 8 ports per group | |
| Loop back | Supports Spanning Tree STP/RSTP | |
| VLAN | Port based VLAN Protocol based VLAN | |
| Multicast | Supports IGMP V1/V2 | |
| Mirroring | Port mirroring | |
| Security Feature | User level management and password protection ARP Detection DOS Defend Port isolation IP+MAC+Port multiple binding | |
| Management | SNMPv1/v2/v3 Web-based GUI and CLI、 Telnet management Support system log | |

IP-COM
World Wide Wireless

Headquarters

IP-COM Networks Co.,Ltd.

Tel: +86 755-27653089

Fax: +86 755-27657178

Email: marketing@ip-com.com.cn

Website: www.ip-com.com.cn

ADD: Tower E3, No1001, Zhongshanyuan Road, Nanshan District, Shenzhen, China.

Copyright©2016 IP-COM Networks Co., Ltd. All Rights Reserved.

