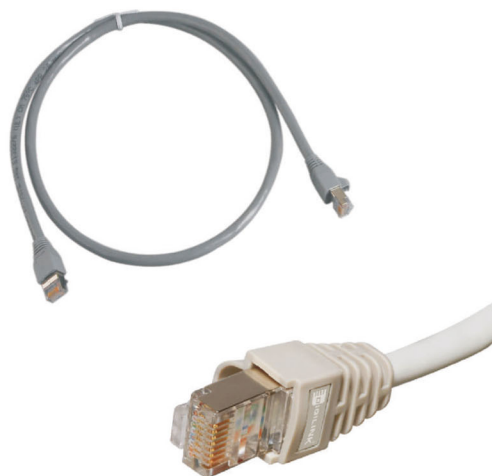


Category 6 STP Patch Cords

DIGILINK G600 STP Patch cables or patch cords are assemblies of 4 twisted pairs 24-26 AWG (0.51mm-0.40mm) stranded wire cables with modular plugs crimped on both ends. T568A and T568B wiring schemes are both available. A drain wire helps to complete a proper ground connection for shielded (screened) version. It allows longer runs with less effect of EMI and RFI.



Product Features & Compliances

- Available in the lengths of 1, 2, 3 & 5 m
- Three piece two layered design
- Cat 6 shielded Twisted pair 100 Ω stranded cable
- Multi Strand and Highly flexible.
- Exceeds the performance requirements as specified under EIA/TIA 568 A/B Category 6 specification.
- 24-26 AWG round.
- HDPE Insulation over conductors, PVC jacket all over
- Individual cable pair separated by a PE former
- Fully shielded RJ 45 Connector
- RoHS Compliant
- ETL Verified
- ANSI/TIA/EIA-568-B.2
- ISO/IEC-11801
- UL94V-0 rated plastic

Specifications

Mechanical

Length: 1, 2, 3 & 5 m
 Standard colours: Grey
 (other colours available on order)
 Wiring: 24-26 AWG
 Polycarbonate Plug
 Gold over Nickel Contacts
 Stranded, Unshielded
 Jack mating life: 200 times

Electrical

Current rating: 1.5A max
 Insulation resistance: 500m Ω (min)
 Voltage rating: 30 V
 Contact resistance: 15m Ω (max) per contact

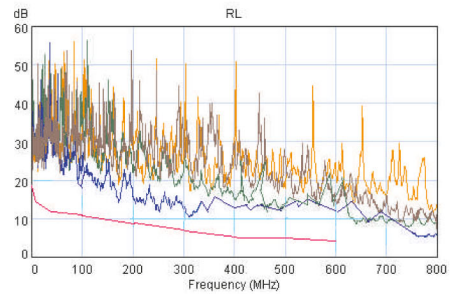
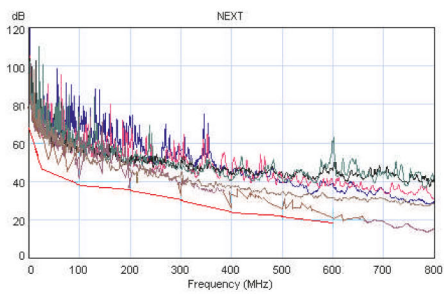
Category 6 STP Patch Cords



DIGILINK Category 6 (G600) STP 100 Ohm LAN Patch Cords

PERFORMANCE CHARACTERISTICS TIA/EIA-568-B2-1												
FREQUENCY (MHz)	INSERTION LOSS (Attenuation) dB/100m		NEXT (dB)		PSNEXT (dB)		ELFEXT (dB)		PSELFEXT (dB)		RETURN LOSS (dB)	
	Standard	DIGILINK	Standard	DIGILINK	Standard	DIGILINK	Standard	DIGILINK	Standard	DIGILINK	Standard	DIGILINK
1	2.2	2	65	80.9	62	78.4	62.7	75.3	59.7	72.7	19	23.4
4	4	3.7	63.1	69	60.6	66.7	51.3	63.3	48.3	61	19	27.8
8	5.7	5.3	58.2	63.7	55.6	62.2	45.2	58.8	42.2	57.1	19	24.4
10	6.3	5.8	56.6	63.2	54	60.9	43.3	58.6	40.3	56.1	19	23.6
16	8	7.4	53.2	63.2	50.6	60.7	39.2	56.7	36.2	55.4	18	23.8
20	9	8.3	51.6	61.5	49	58.9	37.2	52.1	34.2	49.4	17.5	24.4
25	10.1	9.3	50	60	47.3	57.3	35.3	47.2	32.3	44.4	17	22.5
31.25	11.4	10.5	48.4	58.1	45.7	55.6	33.4	43.1	30.4	41.6	16.5	23.1
62.5	16.4	15	43.4	47.7	40.6	45.3	27.3	38.9	24.3	37.4	14	22
100	21.3	19.2	39.9	41.6	37.1	39.5	23.3	34.6	20.3	33.5	12	18.6
200	31.5	28	34.8	36.4	31.9	35.8	17.2	26.7	14.2	25.8	9	15.4
250	35.9	31.6	33.1	36.9	30.2	34.7	15.3	28.7	12.3	25.4	8	15.5
300	43.9	37.9	30.6	33.1	29.7	32.1	13.8	25.4	11.4	22.8	7	14.9
350	49.8	42.1	28.9	31.7	27.6	30.4	12.4	20.5	9.4	20.1	6.6	14.5
400	57.5	49.6	25.5	29.9	24.6	28.3	11.8	19.6	8.3	17.7	5.8	14.4
500	60.2	50.8	23.1	27.8	22.8	25.8	10.1	18.2	7.4	15.9	5	14
600	64.8	51.6	19.5	20.5	18.9	20.2	8.6	17.3	6.5	15.2	4.8	13.8

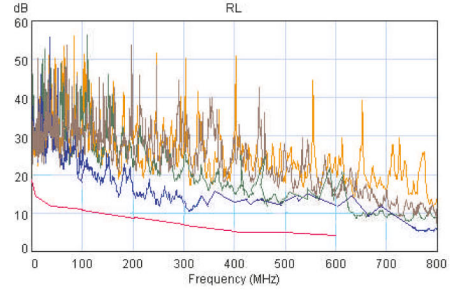
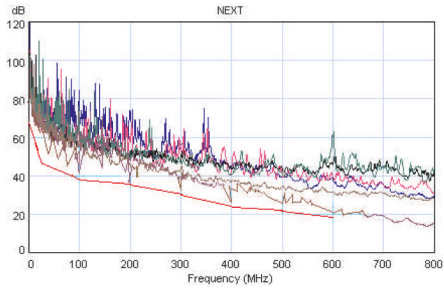
** Extrapolated Values



Ordering Information

Description	Type	Product Code
DIGILINK Cat 6 patch cord	1m	DC6PCSRJ01-GY
	2m	DC6PCSRJ02-GY
	3m	DC6PCSRJ03-GY
	5m	DC6PCSRJ05-GY

Category 6 STP Patch Cords



Ordering Information

Description	Type	Product Code
DIGILINK Cat 6 patch cord	1m	DC6PCSRJ01-GY
	2m	DC6PCSRJ02-GY
	3m	DC6PCSRJ03-GY
	5m	DC6PCSRJ05-GY