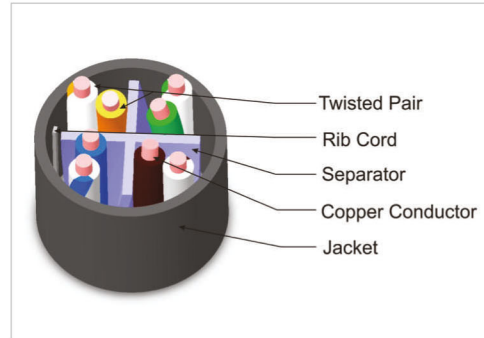


DIGILINK TG500 Cat6+ cable series consists of 100-Ohm impedance, 4-pair UTP cables for horizontal installations in local area networks (LANs). All cables meet and exceed category 6/Class E Standards requirements in TIA/EIA 568-B.2-1, CENELEC EN50173 and ISO/IEC11801.



### Product Features & Compliances

- Exceptional material properties and cable design
- High ACR values- providing low BER (Bit Error-Rate)
- Exceeds Cat 6 Performance
- Extremely high pair-balance-providing excellent EMC (Electromagnetic compatibility)
- Minimum radiations and maximum noise immunity.
- Unique Hologram sticker for authenticity.
- Category 6 according ANSI/TIA/EIA-568-B.2-1
- UL - rated plastic
- RoHS Compliant
- ETL Verified
- 250MHz according to CENELEC EN 50288-5
- CLASS E according to IEC61156-5 (for ISO/iec- 118012 - 2nd Edition)
- Performance verified upto 600 MHz
- Suitable for 10G application for channel length of 50m

### Specifications

**Mechanical**

- Outer Diameter: Nominal diameter 6.0mm
- 4 twisted pair
- Conductor diameter: 0.57mm (AWG)
- Conductor type: 23 AWG bare solid copper.
- Jacket material: PVC
- Standard Colour: Grey

**Electrical**

- Characteristic Impedance :  $100 \pm 6 \Omega$  @ 1-600 Mhz
- DC Resistance: 72  $\Omega$ /km (max)
- Voltage rating: 72 Vdc max
- Dielectric strength: 1500 V/1 minute min rms
- Insulation Resistance: 500m $\Omega$  km (min)@500 Vdc
- Velocity of Propagation (NVP): 67%

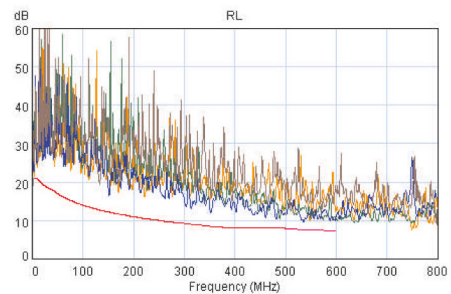
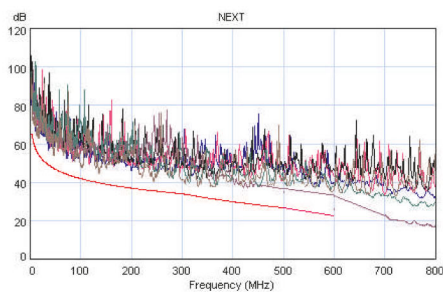
# Category 6+ UTP Solid Cable



## DIGILINK Category 6+ (TG500) UTP 100 Ohm LAN Solid Cable

PERFORMANCE CHARACTERISTICS TIA/EIA-568-B2-1												
FREQUENCY (MHz)	INSERTION LOSS (Attenuation) dB/100m		NEXT (dB)		PSNEXT (dB)		ELFEXT (dB)		PSELFEXT (dB)		RETURN LOSS (dB)	
	Standard	DIGILINK	Standard	DIGILINK	Standard	DIGILINK	Standard	DIGILINK	Standard	DIGILINK	Standard	DIGILINK
1	3	<b>1.3</b>	65	<b>86.2</b>	62	<b>81</b>	64.2	<b>87.1</b>	61.2	<b>79.9</b>	19.1	<b>27.9</b>
4	3.5	<b>2.6</b>	64.5	<b>82.4</b>	61.8	<b>77.4</b>	52.1	<b>81.2</b>	49.1	<b>66.4</b>	21	<b>32.2</b>
8	5	<b>3.8</b>	59.4	<b>76.6</b>	57	<b>76.4</b>	46.1	<b>75.5</b>	43.1	<b>62</b>	21	<b>35.1</b>
10	5.5	<b>4.2</b>	57.8	<b>72.1</b>	55.5	<b>72.1</b>	44.2	<b>72.6</b>	41.2	<b>57.1</b>	21	<b>29.7</b>
16	7	<b>5.4</b>	54.6	<b>76.8</b>	52.2	<b>66.7</b>	40.1	<b>69.2</b>	37.1	<b>52.5</b>	20	<b>33.2</b>
20	7.8	<b>6</b>	53.1	<b>68.6</b>	50.7	<b>64.9</b>	38.2	<b>64.4</b>	35.2	<b>55.2</b>	19.5	<b>31.3</b>
25	8.8	<b>6.8</b>	51.5	<b>66.7</b>	49.1	<b>62.7</b>	36.2	<b>59.6</b>	33.2	<b>51.8</b>	19	<b>30.9</b>
31.25	9.8	<b>7.6</b>	50	<b>71.1</b>	47.5	<b>62.5</b>	34.3	<b>57.6</b>	31.3	<b>52.5</b>	18.5	<b>28.6</b>
62.5	14	<b>10.9</b>	45.1	<b>66.4</b>	42.7	<b>55.9</b>	28.3	<b>52.2</b>	25.3	<b>46.8</b>	16	<b>27.1</b>
100	18	<b>13.9</b>	41.8	<b>62.7</b>	39.3	<b>55.6</b>	24.2	<b>46.4</b>	21.2	<b>43.8</b>	14	<b>23.5</b>
200	26.1	<b>20.4</b>	36.9	<b>53.9</b>	34.3	<b>50.4</b>	18.2	<b>41.5</b>	15.2	<b>30.4</b>	11	<b>22</b>
250	29.5	<b>22.6</b>	35.3	<b>52.1</b>	32.7	<b>44.8</b>	16.2	<b>40</b>	13.2	<b>30.2</b>	10	<b>19.8</b>
300	32.7	<b>25.4</b>	34	<b>49.7</b>	31.4	<b>44.3</b>	14.6	<b>38.8</b>	11.6	<b>28.9</b>	9.2	<b>19.5</b>
350	35.6	<b>27.5</b>	31.8	<b>47</b>	29.1	<b>40.8</b>	13.3	<b>37.2</b>	10.3	<b>27</b>	8.6	<b>18.2</b>
400	38.4	<b>29.2</b>	29.9	<b>41.3</b>	27.1	<b>43.4</b>	12.1	<b>35.8</b>	9.1	<b>27.2</b>	8	<b>17.3</b>
500	43.8	<b>32.5</b>	26.7	<b>37.8</b>	23.8	<b>33.8</b>	10.2	<b>33.4</b>	7.2	<b>21.9</b>	8	<b>13.2</b>
600	54.4	<b>37.7</b>	23.3	<b>36.2</b>	21.5	<b>25.7</b>	9.1	<b>28</b>	6.5	<b>16.6</b>	7.5	<b>11.2</b>

\*\* Extrapolated Values



## Ordering Information

Description	Length	Product Code
DIGILINK Solid Cable Cat 6+, UTP 4 Pair	305m	DCACAUTP4P3X

Note: This cable is used for low Voltage signal transmission used in IT industry.